

## IPBCF / IPBCNS



### For the lifting and transfer of wide flange beam sections and plate girders

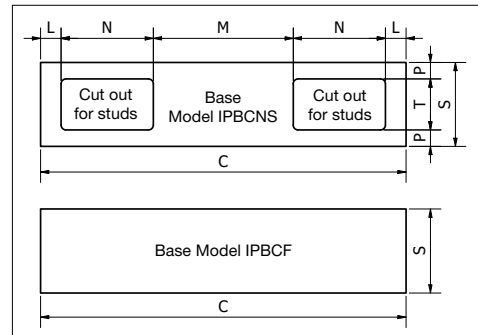
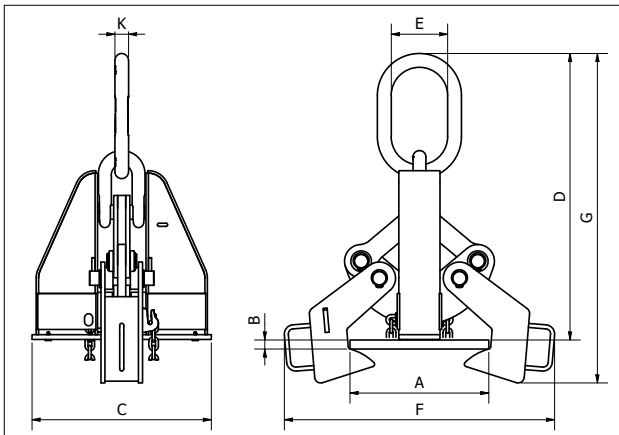
- When lifting, these beam clamps grip the beam at three points, and when properly balanced and safely guided, the beam can be handled even if the clamp is slightly off center lengthwise.
- Capacities: 4.5 through 32 metric tons. (higher Working Load Limits are available upon request).
- Eliminates the need for slings, chokers, and spreader bars.
- When applied to load, the tongs automatically open and slide under the flange of the beam.
- Center plate and gripping tongs work together - the heavier the beam, the greater the clamping pressure.
- Model IPBCNS clamps have a recessed base to accept studs welded to the beam surface.
- Welded alloy steel body for strength and smaller size. Forged alloy components, where required.
- Individually Proof Tested to 2 times the Working Load Limit with certification.
- Company name (Crosby IP), logo, Working Load Limit and jaw opening permanently stamped on body.
- Each product is individually serialized, with the serial number and Proof Load test date stamped on body. User manual with test certificate is included with each clamp.
- Maintenance and repair kits are available.

## Beam Clamps

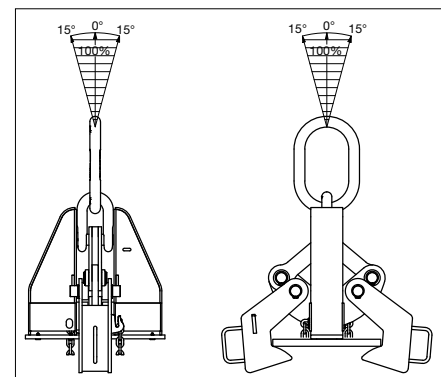
Model No.	WLL (t)*	Stock No.	Weight Each (kg)	Flange Grip Range (mm)		Dimensions (mm)					
				Width (A)	Thickness (B)	C	D	E	F	G	K
IPBCF	4.5	2702000	29.4	102 - 254	13 - 25	348	536 - 452	95	338 - 475	602 - 531	21
IPBCNS	13.5	2702018	62.0	178 - 432	13 - 51	444	775 - 592	140	505 - 749	894 - 719	34
IPBCNS	22.5	2702036	132	406 - 610	25 - 76	596	1012 - 812	152	775 - 969	1140 - 982	44
IPBCNS	32	2702054	240	406 - 914	41 - 102	730	1189 - 1023	178	792 - 1348	1458 - 1258	51

Design factor based on EN 13155 and ASME B30.20.

**NOTE:** Control the beam at all times. Beams should be gripped as near the center as possible. Snubbing lines at each end must be used to control excessive twisting or swinging, and to guide the beam to its proper place. Each lifting situation may have a specific demand which should be addressed before lifting.



Base Stock No.	Base Dimensions (mm)						
	C	L	M	N	P	S	T
IPBCF	348	-	-	-	-	76	-
IPBCNS	444	25	170	112	20	102	62
IPBCNS	596	33	190	170	30	152	92
IPBCNS	730	49	226	203	30	152	92



12