

Overload Detection

Ron 1000 Chain Type Overload and / or Underload Detector

TECHNICAL SPECIFICATIONS



Safety Factor: 5:1. Each system proof-loaded to 200% of capacity (certified).

Switching Nature: Normally open and normally closed.

Rating: 0.5A @ 50 VDC, 0.5A @ 125 VAC.

Life Expectancy: Electrical: over 1 million operations. Mechanical: over 5 million operations.

Environment: Weatherproof, NEMA 4, IP 65.

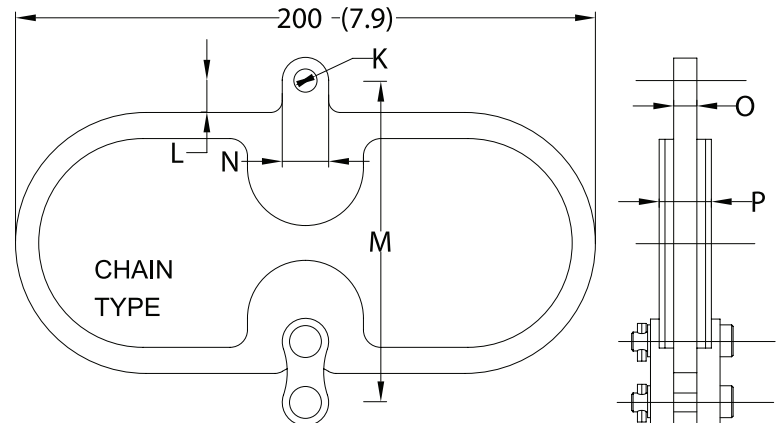
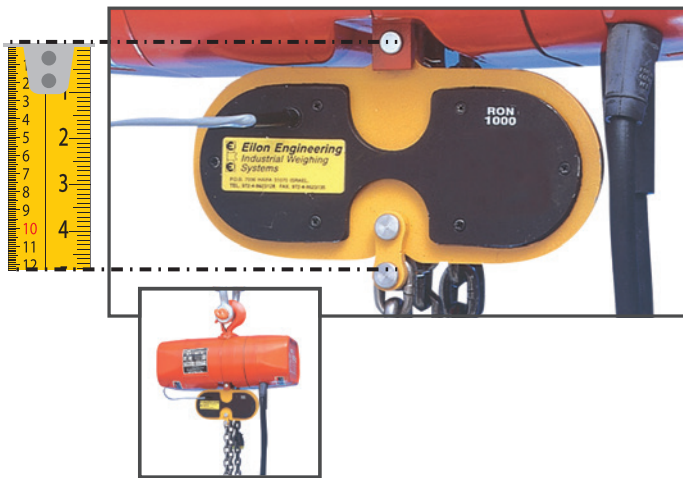
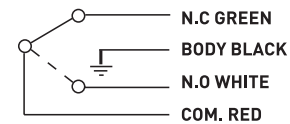
Overload Detection Point: Default: 100% to 110% of capacity.

Temperature Range: -4°F to +175°F [-20°C to + 80°C].

Cable Length: 9.5' (3m).

Material: High strength steel.

Wiring:



| Cat no. | Capacity (for one chain fall) | Chain size | | K | | L | | M Max | | N Max | | O Max | | P Max | |
|---------|-------------------------------------|-------------|----------|------|------|------|------|-------|-----|-------|------|-------|------|-------|------|
| | | tons | mm | inch | mm. | inch | mm. | inch | mm. | inch | mm. | inch | mm. | inch | mm. |
| C-7 | 1.25 | 6mm / 7mm | 1/4 | 8 | 0.31 | 12 | 0.47 | 115 | 4.5 | 20 | 0.79 | 6.5 | 0.26 | 19 | 0.75 |
| C-9 | 1.6 | 8mm / 9mm | 5/16 3/8 | 10 | 0.39 | 16 | 0.63 | 120 | 4.7 | 25 | 1 | 8.5 | 0.34 | 21 | 0.83 |
| C-11 | 2 | 10mm / 11mm | 7/16 | 12 | 0.47 | 17 | 0.67 | 122 | 4.8 | 30 | 1.2 | 10.5 | 0.41 | 23 | 0.91 |

OPTIONS



> Additional detection point.

> The company reserves the right to make changes without notice.